

19, 23, 24, 33, 35, 36, 55, 56, 58, 58P, 58TC, 60, 76, 95

No. 2176
ATA Code 27-50, 32-30

SUBJECT: FLIGHT CONTROLS - MODIFICATION OF FLAP AND LANDING GEAR SELECTOR SWITCH KNOBS

REASON: This Service Bulletin is being issued to modify flap and landing gear selector switch knobs so that they cannot disengage the switch lever lock feature. If the knobs are overtightened, there is a possibility that the switches could be activated unintentionally.

EFFECTIVITY: THE FOLLOWING BEECHCRAFT AIRPLANE SERIALS WITH ELECTRIC FLAP SYSTEM INSTALLED:

B19, serials MB-481 through MB-865;

C23, serials M-1285 through M-2392;

THE FOLLOWING BEECHCRAFT AIRPLANE SERIALS WITH ELECTRIC FLAP SYSTEM AND RETRACTABLE LANDING GEAR INSTALLED, EXCEPT FOR AIRPLANES THAT HAVE THE 'MAGIC HAND' SYSTEM:

A24R, B24R and C24R, serials MC-2 through MC-795;

Bonanza F33, G33, serials CD-1235 through CD-1304;

F33A, serials CE-1 through CE-1098;

F33C, serials CJ-1 through CJ-178;

P35, S35, V35, V35TC, V35A, V35A-TC, V35B, V35B-TC, serials D-6842 through D-10403;

36, A36, serials E-1 through E-2348;

A36TC, B36TC, serials EA-1 through EA-459;

Baron 95-55, 95-A55, 95-B55 and 95-B55A, serials TC-1 through TC-349, TC-351 through TC-1392, TC-1397 through TC-1401, TC-1403 through TC-2456;

95-C55, 95-C55A, D55, D55A, E55 and E55A, serials TC-350, TE-1 through TE-49, TE-51 through TE-1201;

B55B (T-42A), serials TF-1 through TF-70;

56TC, A56TC, serials TG-2 through TG-94;

58 and 58A, serials TH-1 through TH-1507;

58P and 58PA, serials TJ-3 through TJ-497;

BD-762 O

Issued: May, 1993

1 of 4

Beech Aircraft Corporation issues service information for the benefit of owners and fixed base operators in the form of two classes of Service Bulletins. MANDATORY (Red Border) Service Bulletins are changes, inspections and modifications that could affect safety. The factory considers compliance with these Service Bulletins mandatory. OPTIONAL (No Border) Service Bulletins cover changes, modifications, improvements or inspections the factory feels will benefit the owner and although highly recommended, they are not considered mandatory compliance at the time of issuance, unless so stated in the publication. Due to the wide range of information covered by the OPTIONAL Service Bulletin, each owner/operator is responsible for conducting a thorough review of each Optional Service Bulletin and determine if compliance is required based on the applicability of the OPTIONAL Service Bulletin to his particular set of operating conditions. Both classes are mailed to:

- BEECHCRAFT Authorized Outlets.
- Owners of record on the FAA Aircraft Registration Branch List and the BEECHCRAFT International Owner Notification Service List.

- Those having a publications subscription.

Information on Owner Notification Service or Subscriptions can be obtained through any BEECHCRAFT Authorized Outlet. As Service Bulletins are issued, temporary notification in the Service Bulletin Master Index should be made until the index is revised. Warranty will be allowed only when specifically defined in the Service Bulletin and in accordance with the Beech Aircraft Corporation Warranty Policy.

Unless otherwise designated, Beech Aircraft Corporation Service Bulletins as well as BEECHCRAFT kits are approved for installation on BEECHCRAFT airplanes in original or BEECHCRAFT modified configurations only. BEECHCRAFT Service Bulletins and Kits may not be compatible with airplanes modified by STC installations or modifications other than BEECHCRAFT Approved kits.

98-99072D



Member of GAMA
General Aviation
Manufacturers Association

Beechcraft
A Raytheon Company

Service Bulletin No. 2176

58TC and 58TCA, serials TK-1 through TK-151;
Duke 60 and A60, serials P-4 through P-246;
Duchess 76, serials ME-1 through ME-437;
Travel Air D95A and E95, serials TD-534 through TD-721.

COMPLIANCE: At the owner's/operator's option.

APPROVAL: Engineering data contained in this Service Bulletin is FAA approved.

MANPOWER: The following information is for planning purposes only:

Estimated man-hours: 1 hours.

Suggested number of men: 1 man.

The above is an estimate based on experienced, properly equipped personnel complying with this Service Bulletin. Occasionally, after work has started, conditions may be found which could result in additional man-hours.

MATERIAL: None.

SPARES AFFECTED: None.

WARRANTY CREDIT: None.

SPECIAL TOOLS: None.

WEIGHT AND BALANCE: No change.

REFERENCES: None.

**PUBLICATIONS
AFFECTED:** None.

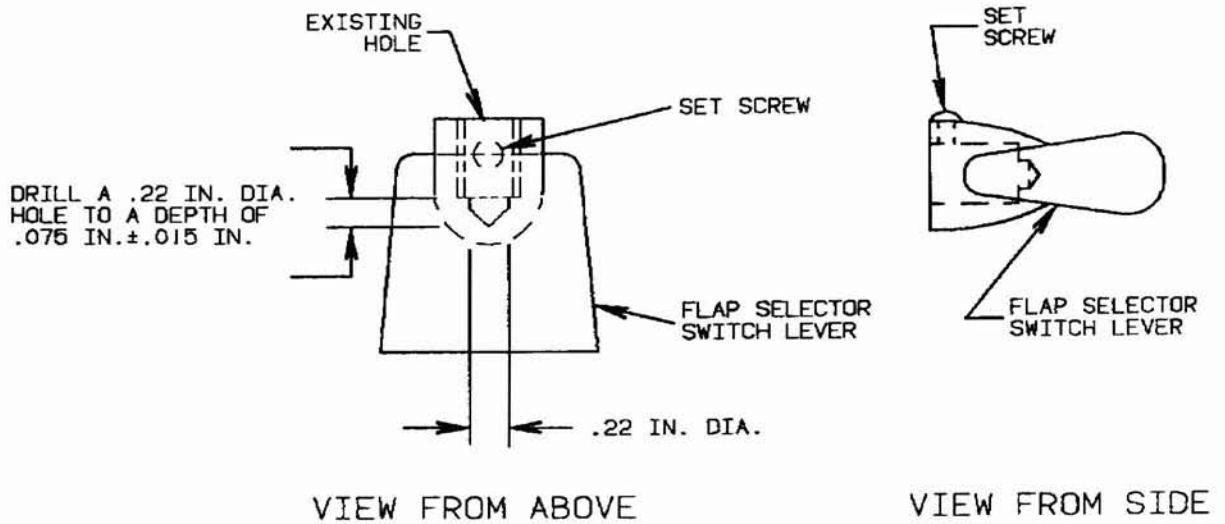
**ACCOMPLISHMENT
INSTRUCTIONS:** This Service Bulletin shall be accomplished as follows:

FLAP SELECTOR SWITCH LEVER MODIFICATION

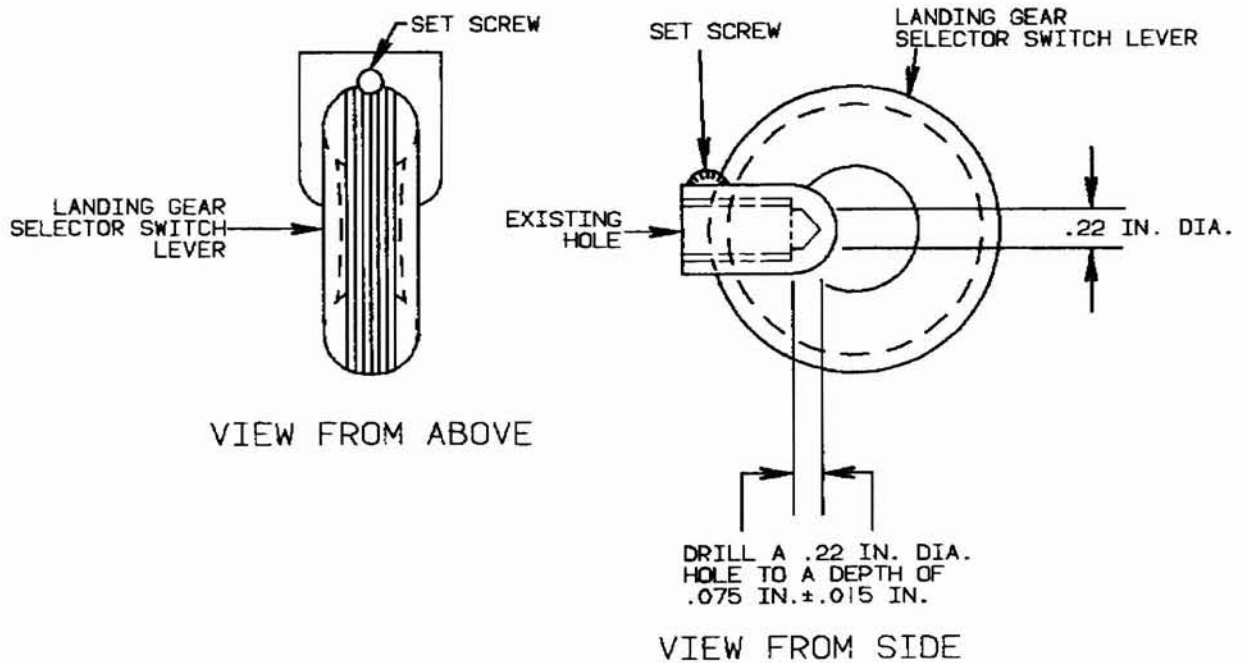
1. Remove the flap selector lever by loosening the set screw and unscrewing the lever from the selector switch.
2. Drill a .22 inch diameter hole down through the center of the existing mounting hole to a depth of .075 inch \pm .015 inch, as shown in Figure 1.
3. Reinstall the lever on the switch.
4. Tighten the set screw.

LANDING GEAR SELECTOR SWITCH LEVER MODIFICATION

1. Remove the landing gear selector lever by loosening the set screw and unscrewing the lever from the selector switch.
2. Drill a .22 inch diameter hole down through the center of the existing mounting hole to a depth of .075 inch \pm .015 inch, as shown in Figure 2.
3. Reinstall the lever on the switch.
4. Tighten the set screw.



**Flap Selector Switch Lever Modification
Figure 1**



**Landing Gear Selector Switch Lever Modification
Figure 2**

Service Bulletin No. 2176

RECORD COMPLIANCE: Upon completion of this Service Bulletin, make an appropriate maintenance record entry.

NOTE

If you are no longer in possession of this airplane, please forward this information to the present owner.