



# CLASS I SERVICE INSTRUCTIONS

19, 23, 24

No. 0835-111  
ATA Code 54-10

**SUBJECT:** NACELLES - MODIFICATION OF THE ENGINE FIREWALL

**EFFECTIVITY:** BEECHCRAFT A23-19, 19A, M19A, and B19, serials MB-250 through MB-520;  
B19 Sport 150, serials MB-521 through MB-788;  
B23 and C23, serials M-1095 through M-1361;  
C23 Sundowner 180, serials M-1362 through M-1797;  
A23-24 and A24, serials MA-326 through MA-368;  
A24R, serials MC-2 through MC-95;  
A24R and B24R Sierra 200, serials MC-96 through MC-411;

**REASON:** To increase the protection provided by the engine firewall.

**COMPLIANCE:** Beech Aircraft Corporation considers this to be a mandatory modification and it should be accomplished as soon as possible after receipt of these Service Instructions but no later than the next scheduled inspection.

**DESCRIPTION:** A doubler is added to the lower right hand side of the engine firewall.

**APPROVAL:** FAA Approved - DOA CE-2.

**MANPOWER:** The following information is for planning purposes only:  
  
Estimated man-hours: 3 hours.  
Suggested number of men: 1 man.

**MATERIALS:** The following parts required for this modification are available through your BEECHCRAFT Parts and Service Outlet.

MODEL	PART NUMBER	DESCRIPTION	QUANTITY
A23-19, 19A, M19A, B19, B23, C23	169-400010-165	Doubler	1 per airplane
	AN530-6R6	Screw	18 per airplane
A23-24, A24, A24R, B24R	169-400025-63	Doubler	1 per airplane
	AN530-6R8	Screw	6 per airplane

AW-1064  
476 I

1 of 3

Beech Aircraft Corporation issues service information for the benefit of owners and fixed base operators in the form of three classes of Service Instructions. CLASS I (Red Border) are changes, inspections, and modifications that could affect safety. The factory considers compliance mandatory. CLASS II (Green Border) covers changes, modifications, improvements or inspections the factory feels will benefit the owner and although highly recommended, they are not considered mandatory compliance, unless specified at the time of issuance. Class I and II are mailed to:

- (a) BEECHCRAFT Aero or Aviation Centers and International Distributors and Dealers.
- (b) Owners of record on the FAA Registration list and the

BEECHCRAFT International Owner Notification Service List.  
(c) Those having a publications subscription.

CLASS III (No Border) covers changes which are optional, maintenance aids, product improvement kits and miscellaneous service information. Compliance is at the owner or operator's prerogative. Copies of Class III are distributed per a and c above. Information on Owner Notification Service or Subscriptions can be obtained through any BEECHCRAFT Aero or Aviation Center, International Distributor and Dealer, or the Factory. As Service Instructions are issued, temporary notation in the index should be made until the index is revised. Warranty will be allowed only when specifically defined in the Service Instructions and in accordance with Beech Warranty Policy.

98-34239D



CLASS I

**Service Instructions No. 0835-111**

**WARRANTY:**

BEECHCRAFT Warranty on a new airplane is 180 days from delivery or 180 days from the date noted on the Owner Warranty Card. Warranty credit for parts replacement and labor to the extent noted under MATERIAL and MANPOWER will be allowed on BEECHCRAFTS within warranty at the time these Service Instructions are released.

Warranty credit for parts replacement and 50% of the labor, not to exceed 1.5 man-hours, will be allowed on a policy adjustment basis for airplanes on which the above warranty period has expired, on claims received prior to January 1, 1977.

All warranty reimbursements are handled through franchised BEECHCRAFT outlets. Owners and operators may arrange with these outlets to perform the work and submit the standard Beech Aircraft Corporation warranty claim form to the Commercial Service Department, Beech Aircraft Corporation, Wichita, Kansas 67201.

**SPECIAL TOOLS:**

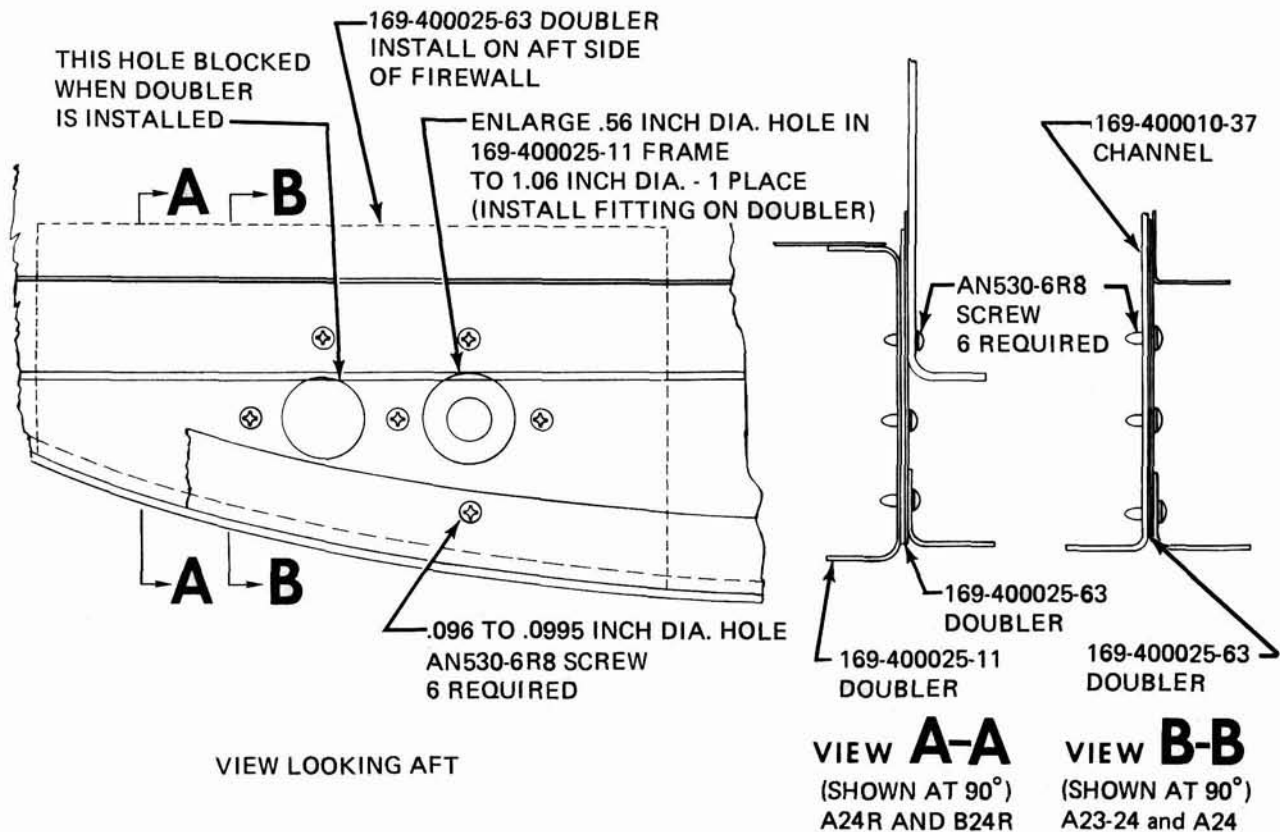
None.

**WEIGHT AND BALANCE:**

None.

**REFERENCES:**

None.



DOUBLER INSTALLATION FOR A23-24, A24, A24R AND B24R

Figure 1.

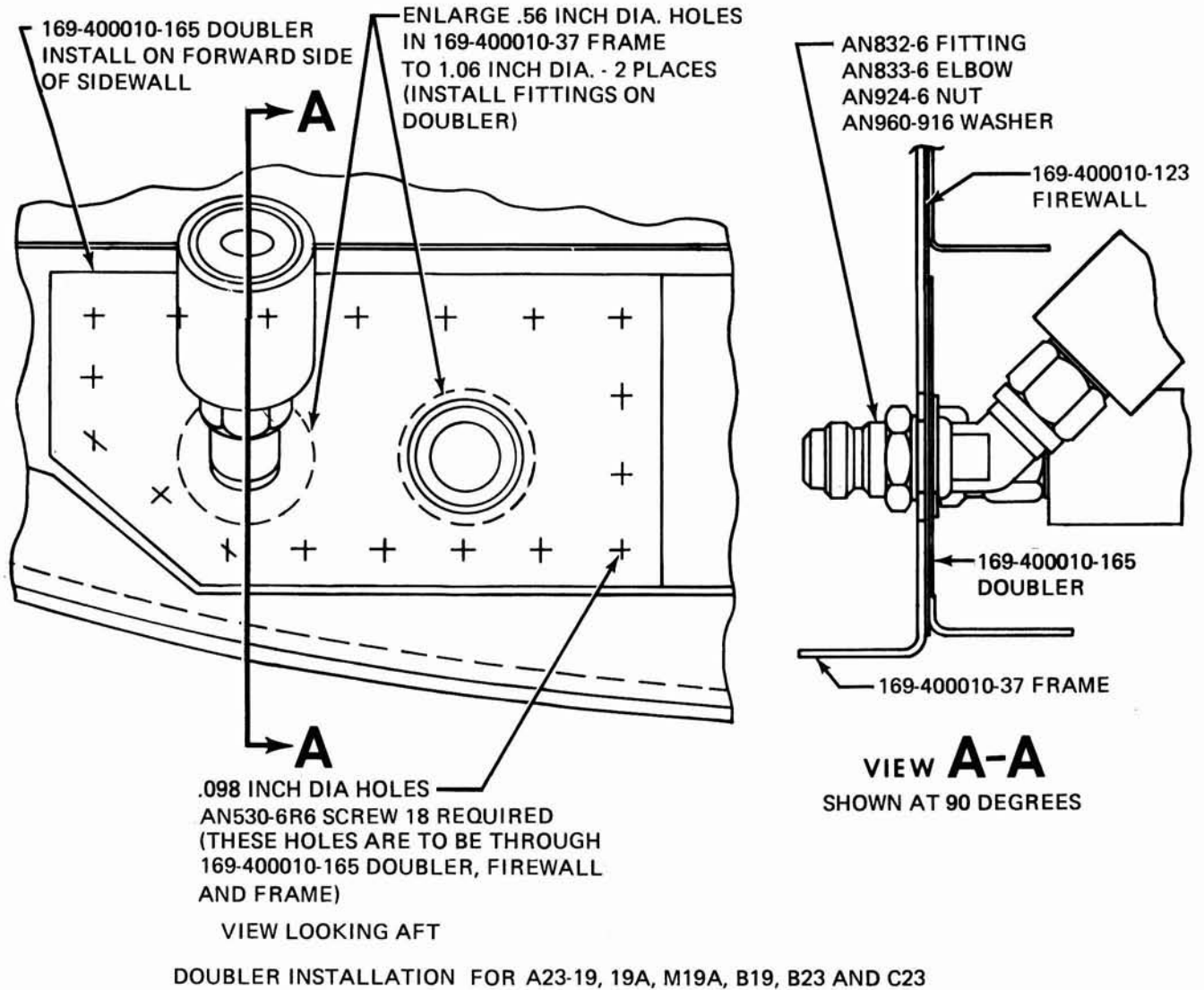


Figure 2.

**PUBLICATIONS AFFECTED:** It is recommended that a note to "See Service Instructions No. 0835-111" be made in all 19, 23, and 24 series Parts Catalog copies, P/N 169-590012H or subsequent, figure 111.

**ACCOMPLISHMENT INSTRUCTIONS:**

These Service Instructions may be accomplished as follows:

1. For all model A23-24, A24, A24R and B24R airplanes listed under EFFECTIVITY, install the P/N 169-400025-63 doubler between the fuselage frame and the aft side of the engine firewall as shown in figure 1.
2. For all model A23-19, 19A, M19A, B19, B23 and C23 airplanes listed under EFFECTIVITY, install P/N 169-400010-165 doubler on the forward side of the engine firewall as shown in figure 2.

**RECORD COMPLIANCE:**

Upon completion of these Service Instructions, make an appropriate maintenance record entry.