

76

No. 1234
ATA Code 76-10

SUBJECT: ENGINE CONTROLS - INSTALLATION OF AN IMPROVED CARBURETOR HEAT CONTROL SPRING DETENT

EFFECTIVITY: BEECHCRAFT Duchess 76, serials ME-1 through ME-437;

REASON: To provide an easily replaceable carburetor heat control spring detent, and to provide a detent for those airplanes not so equipped.

COMPLIANCE: At the owner's discretion or whenever existing parts require replacement.

APPROVAL: Engineering data contained in these Service Instructions is FAA approved.

MANPOWER: The following information is for planning purposes only:
Estimated man-hours: 0.5 hours.
Suggested number of men: 1 man.

The above is an estimate based on experienced personnel complying with these Service Instructions. Occasionally after work has started, conditions may be found which could result in additional man-hours.

MATERIAL: The P/N 105-420019-49 spring and two P/N NAS1398B4-2 rivets, required for this modification, may be ordered through BEECHCRAFT Aero or Aviation Centers and International Distributors and Dealers. The value of the parts required to incorporate these Service Instructions on one airplane is to be advised. Price, when issued, will be subject to change without notice.

DB-320
483 II

1 of 3

CLASS II

Beech Aircraft Corporation issues service information for the benefit of owners and fixed base operators in the form of three classes of Service Instructions. CLASS I (Red Border) are changes, inspections, and modifications that could affect safety. The factory considers compliance mandatory. CLASS II (Green Border) covers changes, modifications, improvements or inspections the factory feels will benefit the owner and although highly recommended, they are not considered mandatory compliance, unless specified at the time of issuance. Class I and II are mailed to:

- (a) BEECHCRAFT Aero or Aviation Centers and International Distributors and Dealers.
- (b) Owners of record on the FAA Registration list and the

BEECHCRAFT International Owner Notification Service List.
(c) Those having a publications subscription.

CLASS III (No Border) covers changes which are optional, maintenance aids, product improvement kits and miscellaneous service information. Compliance is at the owner or operator's prerogative. Copies of Class III are distributed per a and c above. Information on Owner Notification Service or Subscriptions can be obtained through any BEECHCRAFT Aero or Aviation Center, International Distributor and Dealer, or the Factory. As Service Instructions are issued, temporary notation in the index should be made until the index is revised. Warranty will be allowed only when specifically defined in the Service Instructions and in accordance with Beech Warranty Policy.

WARRANTY: Warranty credit for parts and labor to the extent noted under MATERIAL and MANPOWER will be allowed on all affected airplanes which are within the standard BEECHCRAFT warranty period at the time these Service Instructions are released.

All warranty reimbursements are handled through franchised BEECHCRAFT Aero or Aviation Centers and International Distributors and Dealers. Owners and operators should arrange with these outlets to perform the work and have them submit the standard Beech Aircraft Corporation warranty claim form through BEECHCRAFT Parts and Equipment Marketing Wholesalers or International Distributors.

SPECIAL TOOLS: None.

WEIGHT AND BALANCE: None.

REFERENCES: None.

PUBLICATIONS AFFECTED: It is recommended that a note to "See Service Instructions No. 1234" be made in all BEECHCRAFT Duchess 76 Parts Catalog copies, P/N 105-590000-9C or subsequent, Chapter 76-10.

ACCOMPLISHMENT INSTRUCTIONS: These Service Instructions may be accomplished as follows:

1. If a wire-type carburetor heat control lever detent is installed, remove it by drilling out the blind rivet attaching the spring to the escutcheon plate between the carburetor heat control levers. If no spring is installed, proceed to Step 2.

2. Position a P/N 105-420019-49 detent spring between the carburetor heat levers as shown in Figure 1. Ensure that the spring is positioned so that the edge of the lever passes the detent portion of the spring in both the ON and OFF positions.

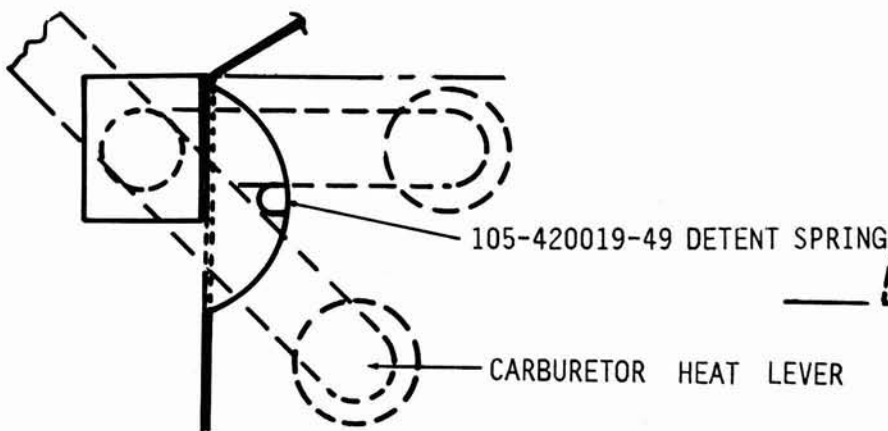


Figure 1

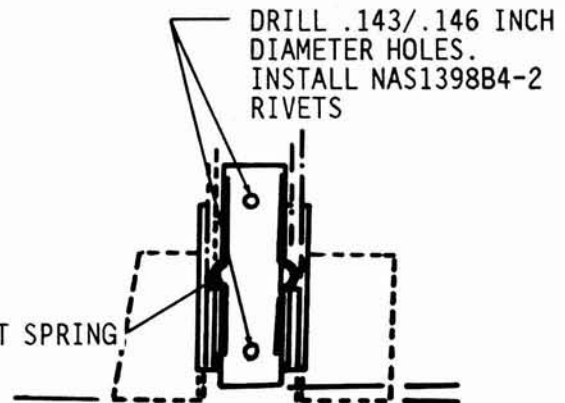


Figure 2

3. Drill two .143/.146 inch diameter holes in the escutcheon plate as shown in Figure 2.

4. Install two P/N NAS1398B4-2 rivets to attach the spring to the escutcheon plate and check the operation of the carburetor heat levers to be sure that both levers move past the detent in both the ON and OFF positions.

CAUTION

Use a drill stop set to .250 inch depth when drilling the holes to prevent damage to components located on the opposite side of the escutcheon plate.

**RECORD
COMPLIANCE:**

Upon completion of these Service Instructions, make an appropriate maintenance record entry.