

Beechcraft SERVICE LETTER

Published by the Customer Service Division

Model: 23

No. 3

Issued: April 8, 1963

SEAT LOCK MODIFICATION ON THE MUSKETEER

To insure more positive locking action of the front seats on the Model 23 Musketeer, the seat locking mechanism has been modified on aircraft M-192 and after. If seat locking difficulty is experienced on aircraft prior to M-192 the following modification may be made:

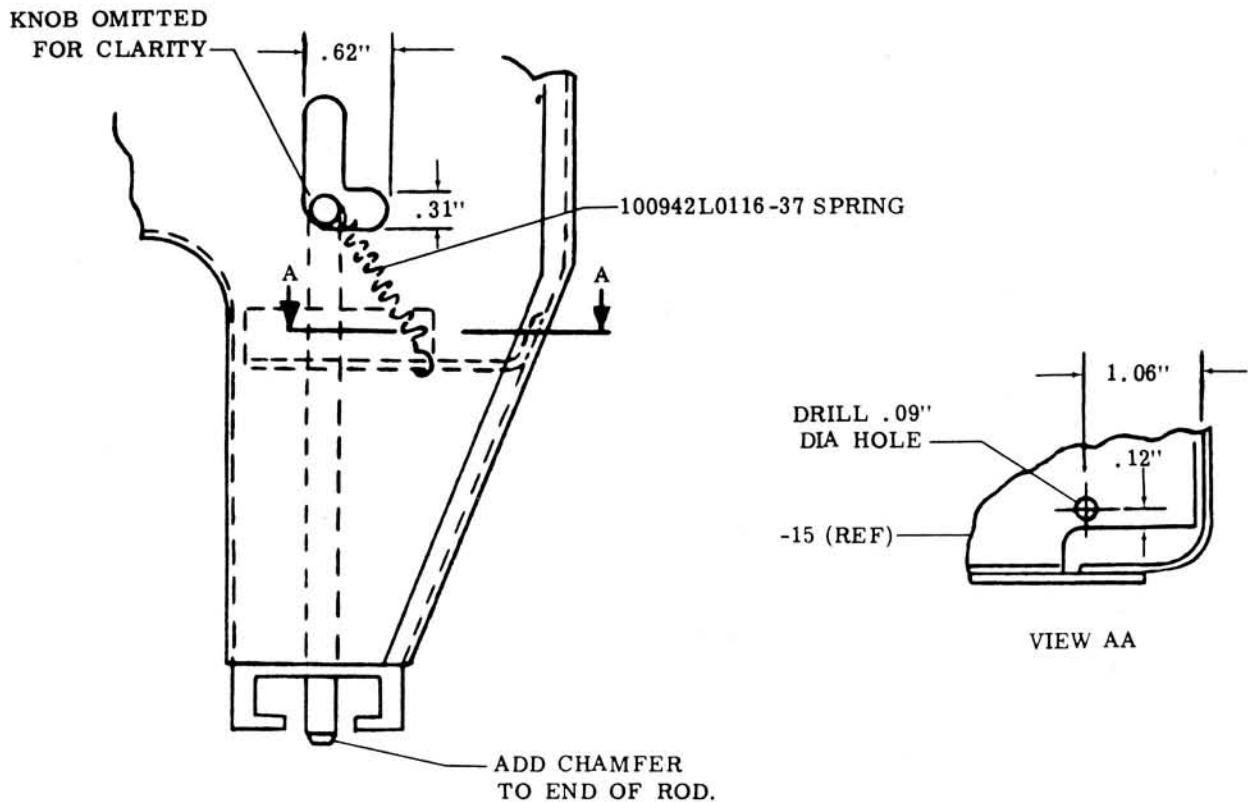
- Remove the front seats from the airplane.
- Remove the spring from the seat adjusting rod and remove the rod from the seat frame.
- Chamfer the end of the adjusting rod.

d. Rework the front of the seat frame, enlarging the hole as shown in the illustration.

e. Drill an .09 inch diameter hole in the 169-534012-15 bracket as shown in the illustration.

f. Replace the seat adjustment rod and attach a heavier spring, P/N 100942L0116-37, between the adjustment rod and the hole drilled through the bracket.

The 100942L0116-37 spring may be obtained at your local BEECHCRAFT distributor, dealer or Certified Service Station.



FRONT VIEW - LEFT FRONT LEG OF SEAT.

THE OPERATION, CARE AND MAINTENANCE OF AN AIRPLANE IS THE OWNERS RESPONSIBILITY. AS CONDITIONS WARRANT, BEECH AIRCRAFT CORPORATION ISSUES SERVICE BULLETINS AND SERVICE LETTERS RECOMMENDING MODIFICATIONS AND OPERATIONAL PROCEDURES TO ENABLE THE OWNER TO GET THE MAXIMUM UTILITY AND SAFETY FROM HIS AIRPLANE.

THESE BULLETINS AND LETTERS ARE AVAILABLE TO BEECHCRAFT OWNERS THROUGH THEIR BEECHCRAFT DISTRIBUTOR OR DEALER. WHEN SERVICE BULLETINS AND LETTERS ARE ISSUED, A TEMPORARY RECORDING OF THE PUBLICATION SHOULD BE MADE ON THE APPROPRIATE INDEX.