

19, 23, 24

No. 0253-151

**SUBJECT:** AILERON AND AILERON TAB CONTROLS, INSTALLATION OF AN IMPROVED AILERON CENTERING CABLE

**AIRCRAFT AFFECTED:** BEECHCRAFT Musketeer Model A23A, and B23, serials M-963 through M-1284; Model A23-24, serials MA-28 through MA-361 and MA-368; Model A23-19 and 19A, serials MB-1 through MB-461.

The aileron centering cable assembly for current production BEECHCRAFT Musketeers incorporates a longer aileron centering cable assembly, P/N 169-524059-7, and an improved method of installation. When it is necessary to replace the existing aileron centering cable on the aircraft noted above, the longer cable assembly, P/N 169-524059-7, may be used as a replacement for the original cable assembly, P/N 169-524059-3. This modification may be accomplished as follows:

1. Lock the aileron controls in neutral with the control lock pin or a 1/4 inch bolt.

2. Install the bolt attached to the centering cable from the bottom inboard side of the aileron control wheel column, with the 169-524059-9 clip, AN960-4 washer and MS20365-428 nut installed on the top outboard side of the column as shown in figure 1 view A-A.

3. Adjust the cable so that equal tension is obtained on each side of the centering cable and tighten the nut to prevent slippage. Caution must be used to prevent over tightening of the nut which may result in crushing the centering cable.

On some of the earlier aircraft of the serials listed above, and prior to serials M-1035, MA-279, MB-249, which did not incorporate the 169-524059-3 aileron centering cable, it will be necessary to perform the following additional steps:

1. Drill a .250/.254 hole in the control column to accommodate the AN4-16A bolt used in the new 169-524059-7 cable assembly. The hole should be 2.25 inches aft of the forward end of the control column tube

and drilled to align with the existing hole in the vertical control column when the wheel is in neutral as shown in figure 1.

2. Discard the 100942S0416-62 spring, and the 169-524000-35 clip and 169-524000-47 arms.

3. Install a new 169-524059-5 arm to the vertical control column in lieu of the 169-524000-35 clip.

4. Install the new 100942S0316-50 spring to the 169-524059-5 arm.

5. Install the new 169-524059-7 cable assembly and 169-524059-9 clip as set forth in the preceding instructions.

The following parts are required when it becomes necessary to replace the original cable, P/N 169-524059-3, on aircraft serials M-1035 through M-1284, MA-279 through MA-361 and MA-368 and MB-249 through MB-461.

PART NUMBER	DESCRIPTION	QUANTITY
169-524059-7	Cable Assembly	1
169-524059-9	Clip	1

For aircraft serials M-963 through M-1034, MA-28 through MA-278 and MB-1 through MB-248 the following parts are required.

PART NUMBER	DESCRIPTION	QUANTITY
100942S0316-50	Spring	1
169-524059-5	Arm	1
169-524059-9	Clip	1
169-524059-7	Cable Assembly	1
MS20365-428	Nut	1
AN960-4	Washer	1

AW 299

869

Beech Aircraft Corporation issues service information for the benefit of owners and fixed base operators in the form of three classes of Service Instructions. CLASS I (Red Border) are changes, inspections, and modifications that could affect safety. The factory considers compliance mandatory. CLASS II (Green Border) covers changes, modifications, improvements or inspections the factory feels will benefit the owner and although highly recommended, they are not considered mandatory compliance, unless specified at the time of issuance. Class I and II are mailed to:

- (a) BEECHCRAFT Aero or Aviation Centers and International Distributors and Dealers
- (b) Owners of record on the FAA Registration list and the

BEECHCRAFT International Owner Notification Service List.  
(c) Those having a publications subscription.

CLASS III (No Border) covers changes which are optional, maintenance aids, product improvement kits and miscellaneous service information. Compliance is at the owner or operator's prerogative. Copies of Class III are distributed per a and c above. Information on Owner Notification Service or Subscriptions can be obtained through any BEECHCRAFT Aero or Aviation Center, International Distributor and Dealer, or the Factory. As Service Instructions are issued, temporary notation in the index should be made until the index is revised. Warranty will be allowed only when specifically defined in the Service Instructions and in accordance with Beech Warranty Policy.

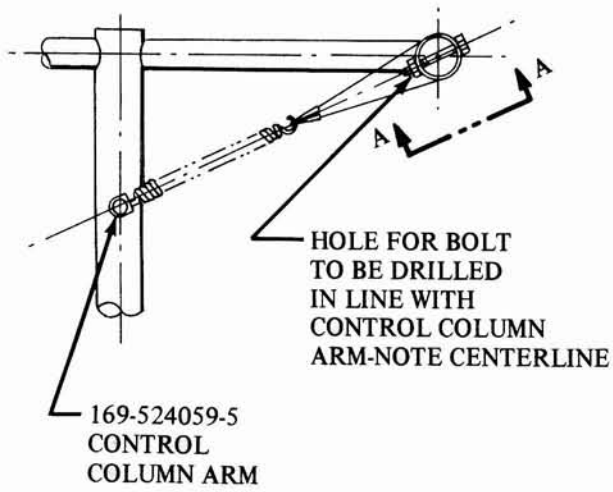
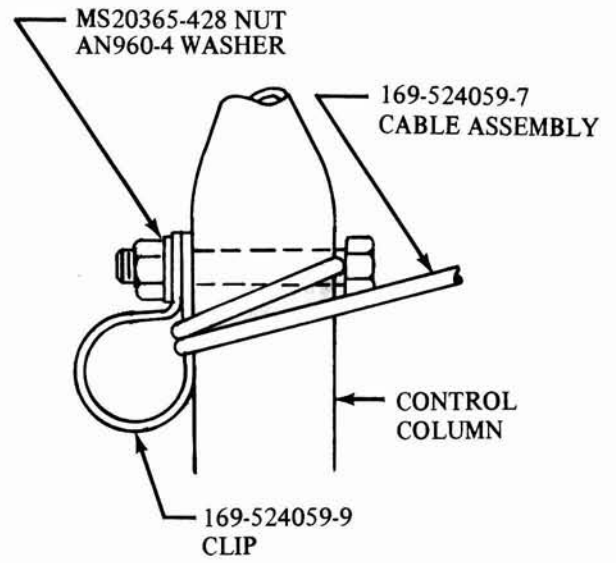


FIGURE 1



VIEW A-A