



CLASS I SERVICE INSTRUCTIONS

CLASS I

76, 77

No. 1220
ATA Code 71-00

SUBJECT: POWER PLANT - MODIFICATION OF THE CRANKCASE BREATHER TUBE

EFFECTIVITY: PART I

BEECHCRAFT Skipper 77, serials WA-1 through WA-312.

PART II

BEECHCRAFT Duchess 76, serials ME-1 through ME-437.

REASON: To reduce the possibility of crankcase breather tube blockage.

COMPLIANCE: Beech Aircraft Corporation considers this to be a mandatory modification and it should be accomplished as soon as possible after receipt of these Service Instructions, but no later than the next 50 service hours.

APPROVAL: Engineering data contained in these Service Instructions is FAA approved.

MANPOWER: The following information is for planning purposes only:

PART I

Estimated man-hours: 0.5 hour.
Suggested number of men: 1 man.

PART II

Estimated man-hours: 1 hour.
Suggested number of men: 1 man.

MATERIAL: None.

WARRANTY: Warranty credit for labor to the extent noted under MANPOWER will be allowed on all claims submitted prior to June 30, 1983.

All warranty reimbursements are handled through franchised BEECHCRAFT Aero or Aviation Centers and International Distributors and Dealers. Owners and operators may arrange with these outlets to perform the work and have them submit the standard Beech Aircraft Corporation warranty claim form through BEECHCRAFT Parts and Equipment Marketing Wholesalers or International Distributors.

DB-312
682 I

1 of 3

Beech Aircraft Corporation issues service information for the benefit of owners and fixed base operators in the form of three classes of Service Instructions. CLASS I (Red Border) are changes, inspections, and modifications that could affect safety. The factory considers compliance mandatory. CLASS II (Green Border) covers changes, modifications, improvements or inspections the factory feels will benefit the owner and although highly recommended, they are not considered mandatory compliance, unless specified at the time of issuance. Class I and II are mailed to:

- (a) BEECHCRAFT Aero or Aviation Centers and International Distributors and Dealers.
- (b) Owners of record on the FAA Registration list and the

BEECHCRAFT International Owner Notification Service List.
(c) Those having a publications subscription

CLASS III (No Border) covers changes which are optional, maintenance aids, product improvement kits and miscellaneous service information. Compliance is at the owner or operator's prerogative. Copies of Class III are distributed per a and c above. Information on Owner Notification Service or Subscriptions can be obtained through any BEECHCRAFT Aero or Aviation Center, International Distributor and Dealer, or the Factory. As Service Instructions are issued, temporary notation in the index should be made until the index is revised. Warranty will be allowed only when specifically defined in the Service Instructions and in accordance with Beech Warranty Policy.

98-34239D



Service Instructions No. 1220

SPECIAL TOOLS: None.

**WEIGHT AND
BALANCE:** None.

REFERENCES: None.

**PUBLICATIONS
AFFECTED:** None.

ACCOMPLISHMENT

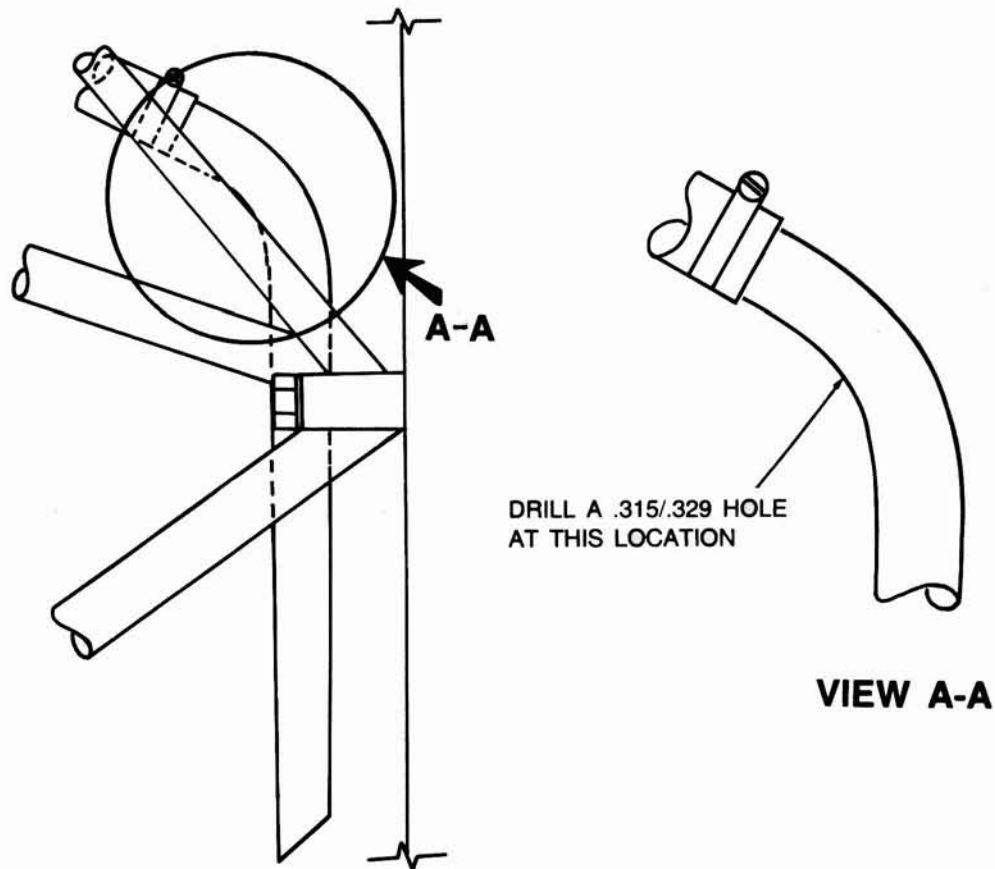
INSTRUCTIONS: These Service Instructions may be accomplished as follows:

PART I

1. Remove the engine cowling.
2. Locate the breather tube and drill a .315/.329 inch diameter hole on the inside face and at the approximate

center of the tube bend (refer to figure 1).

3. Deburr the hole and reinstall the engine cowling.

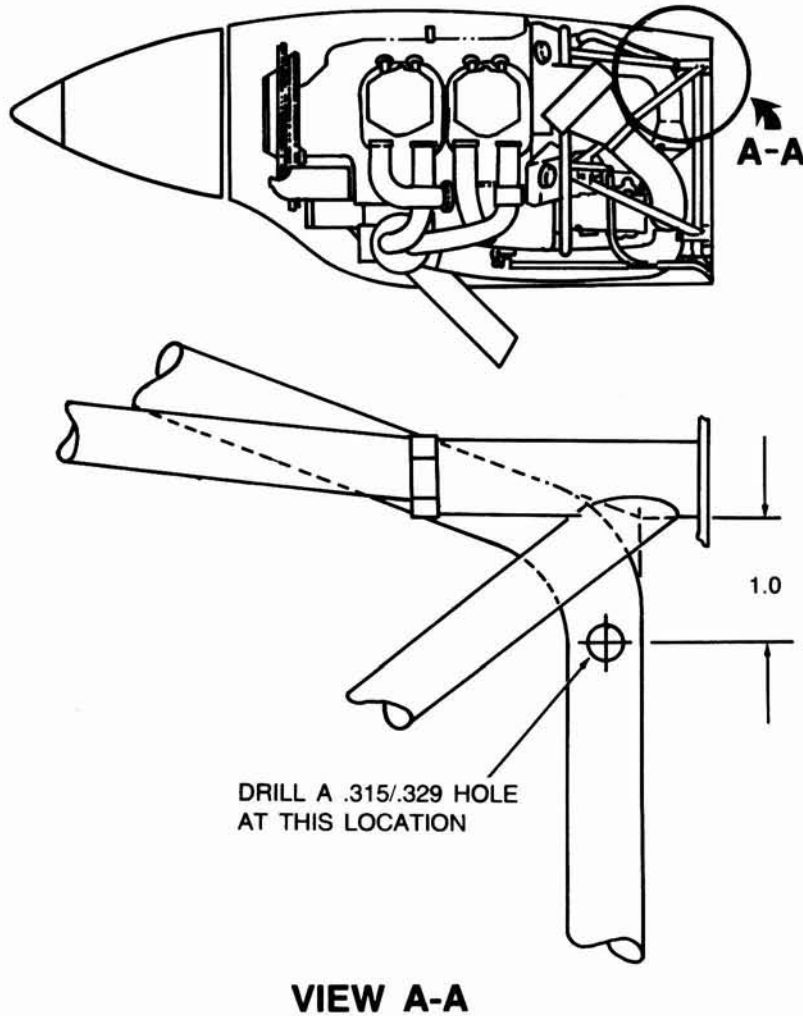


Skipper Crankcase Breather Tube

Figure 1.

PART II

1. Remove the upper engine cowling.
2. Locate the breather tube and drill a .315/.329 inch diameter hole on the left side of the tube 1.0 inch below the engine mount-to-firewall attach lug (refer to figure 2).
3. Deburr the hole and reinstall the engine cowling.
4. Repeat the procedure on the other engine.



Duchess Crankcase Breather Tube

Figure 2.

**RECORD
COMPLIANCE:**

Upon completion of these Service Instructions, make an appropriate maintenance record entry.